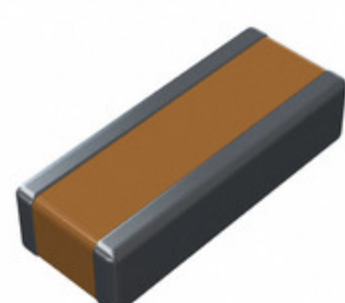


**03066C104MAT2A**



**Part Number:** 03066C104MAT2A  
**Manufacturer:** AVX Corporation  
**Description:** CAP CER 0.1UF 6.3V X7R 0306  
**Data sheet:** [Ceramic Chip Capacitor Catalog](#)  
[Low Inductance Capacitors \(RoHS\)](#)

**RoHS Status:** Lead free / RoHS Compliant  
**Ship From:** Hong Kong  
**Shipment Way:** DHL/Fedex/TNT/UPS/EMS

Images are for reference only.  
 See Product Specifications for product details.  
 Buy 03066C104MAT2A with confidence from  
 Component-World.HK, 1 Year Warranty

[Request For Quotation](#)

**PRODUCT PARAMETER**

<b>Part Number</b>	03066C104MAT2A	<b>Manufacturer</b>	<a href="#">AVX Corporation</a>
<b>Description</b>	CAP CER 0.1UF 6.3V X7R 0306	<b>Lead Free Status / RoHS Status</b>	Lead free / RoHS Compliant
<b>Quantity Available</b>	130366 pcs	<b>Data sheet</b>	<a href="#">Ceramic Chip Capacitor Catalog</a> <a href="#">Low Inductance Capacitors (RoHS)</a>
<b>Category</b>	<a href="#">Capacitors</a>	<b>Voltage - Rated</b>	6.3V
<b>Tolerance</b>	±20%	<b>Thickness (Max)</b>	0.024" (0.61mm)
<b>Temperature Coefficient</b>	X7R	<b>Size / Dimension</b>	0.032" L x 0.063" W (0.81mm x 1.60mm)
<b>Series</b>	-	<b>Ratings</b>	-
<b>Packaging</b>	Tape & Reel (TR)	<b>Package / Case</b>	0306 (0816 Metric)
<b>Operating Temperature</b>	-55°C ~ 125°C	<b>Mounting Type</b>	Surface Mount, MLCC
<b>Moisture Sensitivity Level (MSL)</b>	1 (Unlimited)	<b>Manufacturer Standard Lead Time</b>	10 Weeks
<b>Lead Style</b>	-	<b>Lead Spacing</b>	-
<b>Lead Free Status / RoHS Status</b>	Lead free / RoHS Compliant	<b>Height - Seated (Max)</b>	-
<b>Features</b>	Low ESL (Reverse Geometry)	<b>Failure Rate</b>	-
<b>Detailed Description</b>	0.1µF ±20% 6.3V Ceramic Capacitor X7R 0306 (0816 Metric)	<b>Capacitance</b>	0.1µF
<b>Applications</b>	Bypass, Decoupling		

Component-World.com is a Reliable Stocking Distributor of Electronic Components. We specialize in all AVX Corporation series electronic components. We have 130366 pieces of AVX Corporation 03066C104MAT2A in stock available now. Request a quote from electronics components distributor at Component-World.com, our sales team will contact you within 24 hours.  
 RFQ Email: info@Components-World.com

**RELATED PRODUCTS**

	<b>Part#:</b> <a href="#">03066C473MAT2A</a> <b>Description:</b> CAP CER 0.047UF 6.3V X7R 0306	<b>Manufacturers:</b> <a href="#">AVX Corporation</a>	<a href="#">RFQ</a>
	<b>Part#:</b> <a href="#">03066C103KAT2A</a> <b>Description:</b> CAP CER 10000PF 6.3V X7R 0306	<b>Manufacturers:</b> <a href="#">AVX Corporation</a>	<a href="#">RFQ</a>
	<b>Part#:</b> <a href="#">03066C103MAT2A</a> <b>Description:</b> CAP CER 10000PF 6.3V X7R 0306	<b>Manufacturers:</b> <a href="#">AVX Corporation</a>	<a href="#">RFQ</a>
	<b>Part#:</b> <a href="#">03066C473KAT2A</a> <b>Description:</b> CAP CER 0.047UF 6.3V X7R 0306	<b>Manufacturers:</b> <a href="#">AVX Corporation</a>	<a href="#">RFQ</a>
	<b>Part#:</b> <a href="#">03066C102KAT2A</a> <b>Description:</b> CAP CER 1000PF 6.3V X7R 0306	<b>Manufacturers:</b> <a href="#">AVX Corporation</a>	<a href="#">RFQ</a>
	<b>Part#:</b> <a href="#">0306704</a> <b>Description:</b> PLIERS INSERT/EXTRACT TOOL	<b>Manufacturers:</b> <a href="#">Phoenix Contact</a>	<a href="#">RFQ</a>
	<b>Part#:</b> <a href="#">0306YC102MAT2A</a> <b>Description:</b> CAP CER 1000PF 16V X7R 0306	<b>Manufacturers:</b> <a href="#">AVX Corporation</a>	<a href="#">RFQ</a>
	<b>Part#:</b> <a href="#">03063C472KAT2A</a> <b>Description:</b> CAP CER 4700PF 25V X7R 0306	<b>Manufacturers:</b> <a href="#">AVX Corporation</a>	<a href="#">RFQ</a>
	<b>Part#:</b> <a href="#">03063C223MAT2A</a> <b>Description:</b> CAP CER 0.022UF 25V X7R 0306	<b>Manufacturers:</b> <a href="#">AVX Corporation</a>	<a href="#">RFQ</a>
	<b>Part#:</b> <a href="#">03063C332KAT2A</a> <b>Description:</b> CAP CER 3300PF 25V X7R 0306	<b>Manufacturers:</b> <a href="#">AVX Corporation</a>	<a href="#">RFQ</a>
	<b>Part#:</b> <a href="#">03066C104KAT2A</a> <b>Description:</b> CAP CER 0.1UF 6.3V X7R 0306	<b>Manufacturers:</b> <a href="#">AVX Corporation</a>	<a href="#">RFQ</a>
	<b>Part#:</b> <a href="#">0306YC103KAT2A</a> <b>Description:</b> CAP CER 10000PF 16V X7R 0306	<b>Manufacturers:</b> <a href="#">AVX Corporation</a>	<a href="#">RFQ</a>
	<b>Part#:</b> <a href="#">03063C472MAT2A</a> <b>Description:</b> CAP CER 4700PF 25V X7R 0306	<b>Manufacturers:</b> <a href="#">AVX Corporation</a>	<a href="#">RFQ</a>
	<b>Part#:</b> <a href="#">0306600000</a> <b>Description:</b> PIN LOCKING TS15 STEEL SST 1.3	<b>Manufacturers:</b> <a href="#">Weidmüller</a>	<a href="#">RFQ</a>
	<b>Part#:</b> <a href="#">03066C472KAT2A</a> <b>Description:</b> CAP CER 4700PF 6.3V X7R 0306	<b>Manufacturers:</b> <a href="#">AVX Corporation</a>	<a href="#">RFQ</a>
	<b>Part#:</b> <a href="#">03066C224KAT2A</a> <b>Description:</b> CAP CER 0.22UF 6.3V X7R 0306	<b>Manufacturers:</b> <a href="#">AVX Corporation</a>	<a href="#">RFQ</a>
	<b>Part#:</b> <a href="#">03066C224MAT4A</a> <b>Description:</b> CAP CER 0.22UF 6.3V X7R 0306	<b>Manufacturers:</b> <a href="#">AVX Corporation</a>	<a href="#">RFQ</a>
	<b>Part#:</b> <a href="#">03066C224MAT2A</a> <b>Description:</b> CAP CER 0.22UF 6.3V X7R 0306	<b>Manufacturers:</b> <a href="#">AVX Corporation</a>	<a href="#">RFQ</a>
	<b>Part#:</b> <a href="#">03066C102MAT2A</a> <b>Description:</b> CAP CER 1000PF 6.3V X7R 0306	<b>Manufacturers:</b> <a href="#">AVX Corporation</a>	<a href="#">RFQ</a>
	<b>Part#:</b> <a href="#">0306YC102KAT2A</a> <b>Description:</b> CAP CER 1000PF 16V X7R 0306	<b>Manufacturers:</b> <a href="#">AVX Corporation</a>	<a href="#">RFQ</a>

**Related keywords for 03066C104MAT2A**

<a href="#">AVX Corporation 03066C104MAT2A</a>	<a href="#">03066C104MAT2A distributor</a>	<a href="#">03066C104MAT2A supplier</a>	<a href="#">03066C104MAT2A price</a>
<a href="#">03066C104MAT2A download datasheet</a>	<a href="#">03066C104MAT2A datasheet</a>	<a href="#">03066C104MAT2A stock</a>	<a href="#">buy 03066C104MAT2A</a>
<a href="#">AVX Corporation 03066C104MAT2A</a>	<a href="#">AVX Corporation [MIL] 03066C104MAT2A</a>		